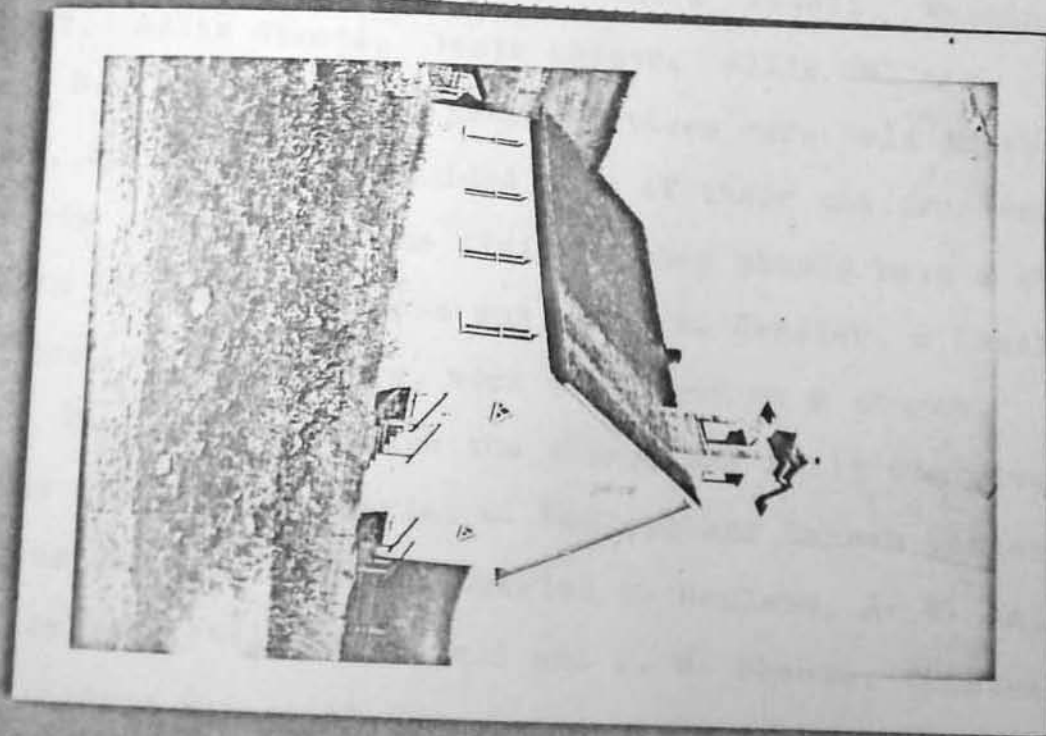
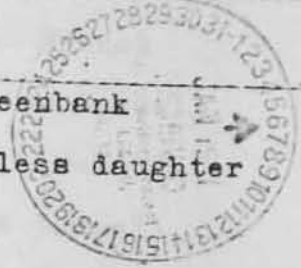
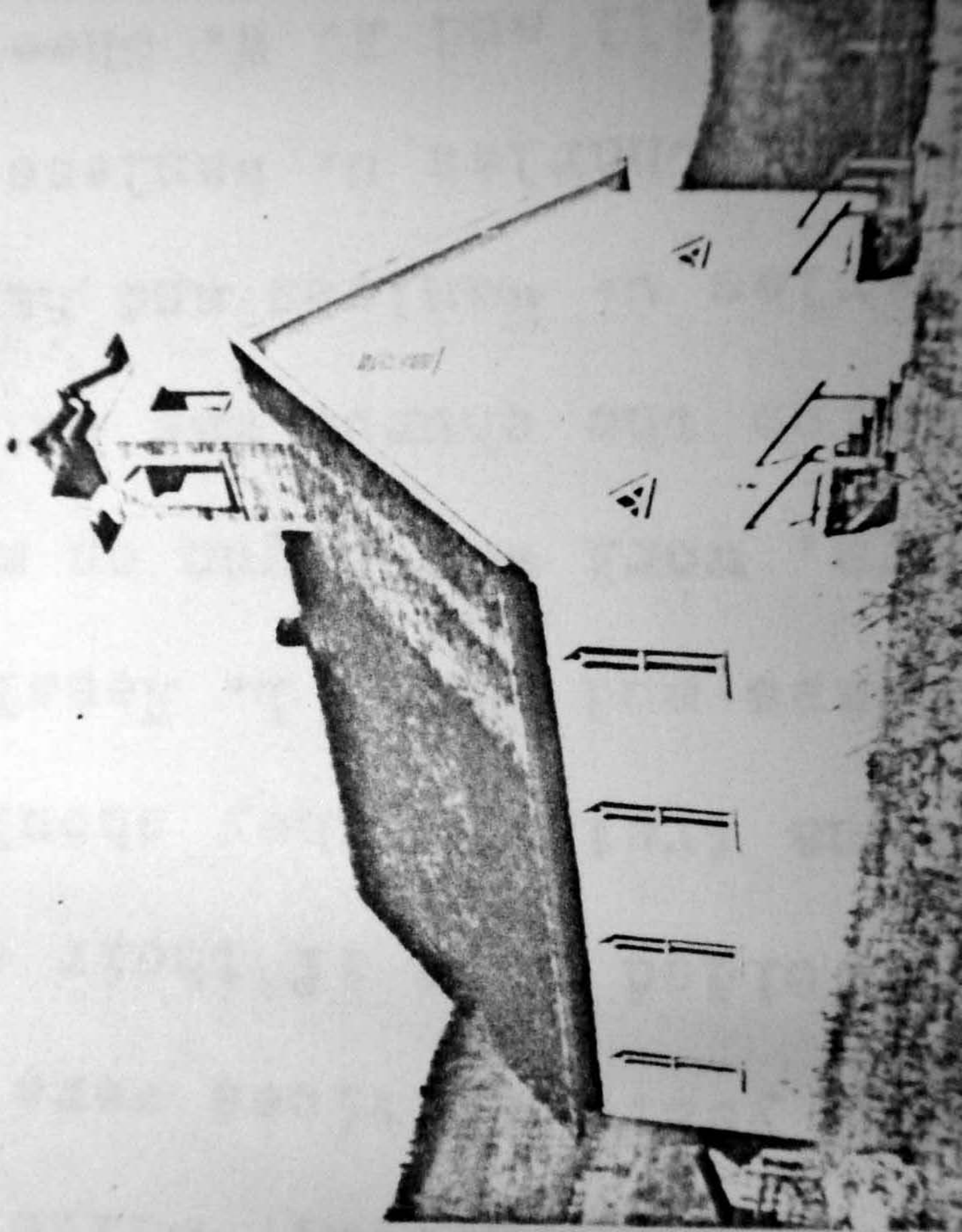


West Virginia Writers' Project
RESEARCH IDENTIFICATION REPORT

Subject Pocahontas County History Date January 3, 1941
Chapter 6 Religion
Research Worker Juanita S. Dilley Date Research Taken Dec. 10, 20,
Jan. 1, 1941
Typist Juanita S. Dilley Date Typed January 3, 1941
Source Deed Book 41 page 270 Date Filed _____
Church records in the Arbovale and the Greenbank
Parsonages. Rev. D. R. Carder, and Maud Wanless daughter
of Charles C. Wanless





Juanita S. Dilley
Clover Lick, W. Va
Pocahontas County
Chapter 6

MOUNT UNION M. E. CHURCH--WANLESS

The first class at Wanless was organized in the old Wanless school house with the following members: Rachel Swink, E. A. Curry, Mary Beverage, Margaret Ann Cassell, Susanah Galford, Lousia Cassell, John Cassell, Matilda Wanless, John Wanless, Samuel Cassell, Martha Cassell, Martha J. Shinaberry, B. B. Tallman, Mattie E. Sutton, Minnie Cassell, Mary Kessler, Rev. Henry L. Kessler, Henry McCray, Sarah Cassell, Indiana Cassell, W. R. Sutton, William Cassell, Jacob Cassell, Sr., Jacob Cassell Jr., Squire Hevener, Alice Sutton, Bessie Cassell, Washington Oliver, Allie Sheets, Vesta Sheets, Allie Tallman, and Dosie Sutton. For many years services were held in the school house, but the people decided that if their children were to have the proper religious training they should have a church, so with Charles C. Wanless and Henry L. Kessler, a local preacher, as the leaders, work was begun on a church.

The land upon which the church was built was given on October 15, 1906 by Charles C. Wanless and Hannah Wanless his wife, to Henry L. Kessler, Charles C. Wanless, A. W. Tallman, J. H. Tallman, William Cassell and A. W. Sheets, trustees of the Methodist Episcopal Church and the Methodist Episcopal Church, South for the use and benefit of the members of the Mount Union Church near Wanless.

Subje
Reset
Typi
Sour

The West Virginia Pulp and Paper Co. of Cass gave part of the lumber and the people of the community gave timber and had it sawed on near by saw mills. In this way all of the lumber was donated. Money for other expenses was collected by subscription. John and Robert Noel were the carpenters. The church was dedicated on July 4, 1907.

There is a Missionary Society with Mrs. Dr. Hull of Durbin as the President. This church takes a collection on the first Sunday in each month for mission work.

The oldest members of the church were the above named trustees and their families, also the families of Jacob Cassell Sr., and Jacob Cassell, Jr.

The present Stewards are Minnie Wanless, Willis Cassell, Garnet Beverage and Walter Beverage.

The present Trustees are Willis Cassell, George Wanless and Elmer Houchin. George Wanless is the class leader, and Willis Cassell is the Sunday school Supt.

Records show a membership of 43 for 1940, but the above named persons are the main church workers.

It is a strong church for a small country church, with good attendance at Sunday School and church services throughout the year.

It was at first an appointment on the Greenbank Circuit, but is now on the Arbovale Circuit with Rev. D. K. Carder as the present pastor.